

# TOWN OF KILLINGWORTH PARK AND RECREATION COMMISSION

## PROJECT PLANS

### PROPOSED BASEBALL/MULTI-PURPOSE ATHLETIC FIELD ERIC W. AUER KILLINGWORTH RECREATIONAL PARK PHASE II

DECEMBER 6, 2010

REVISED 8/16/23



SCALE: 1" = 1000'

#### LIST OF DRAWINGS:

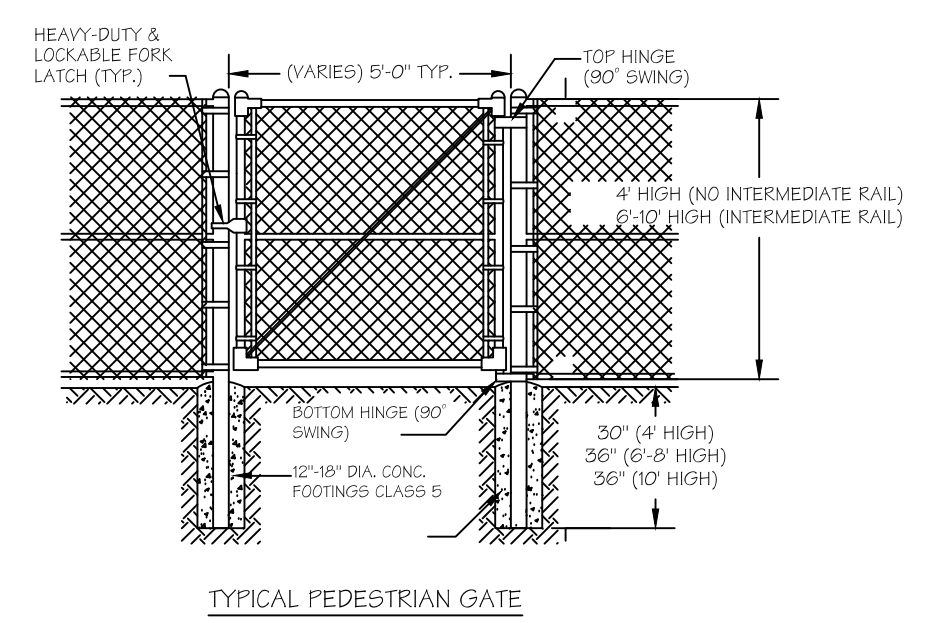
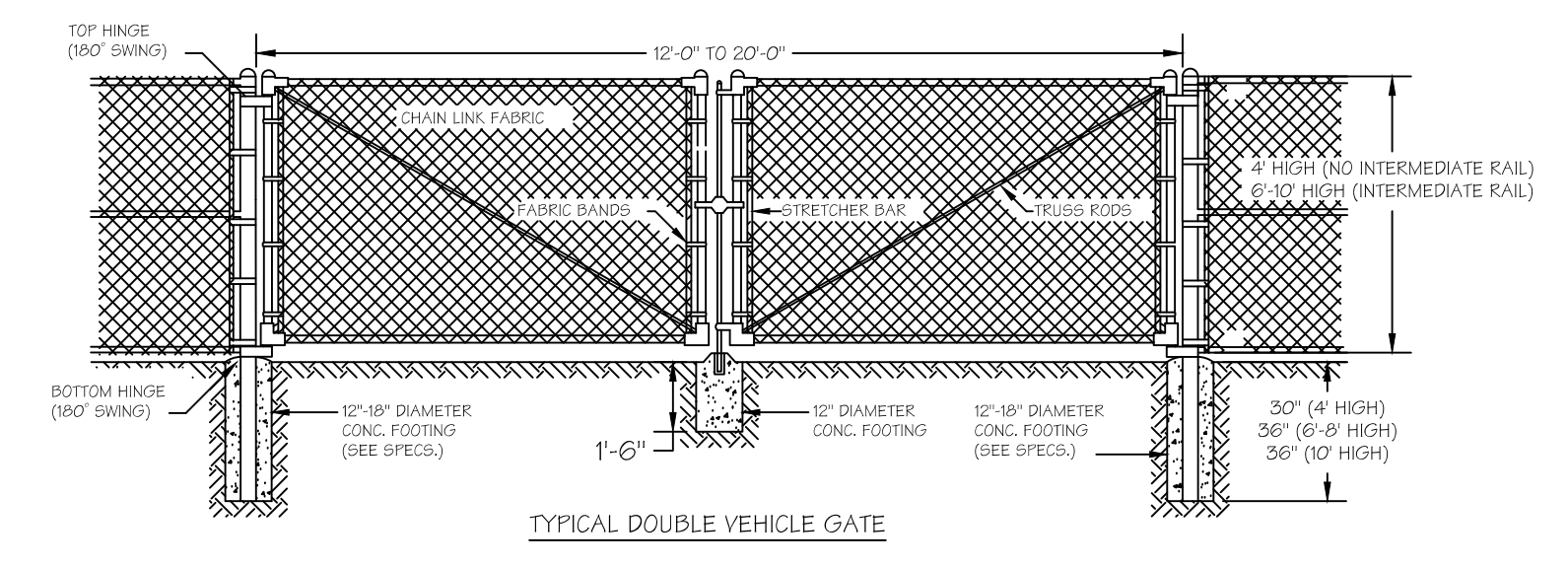
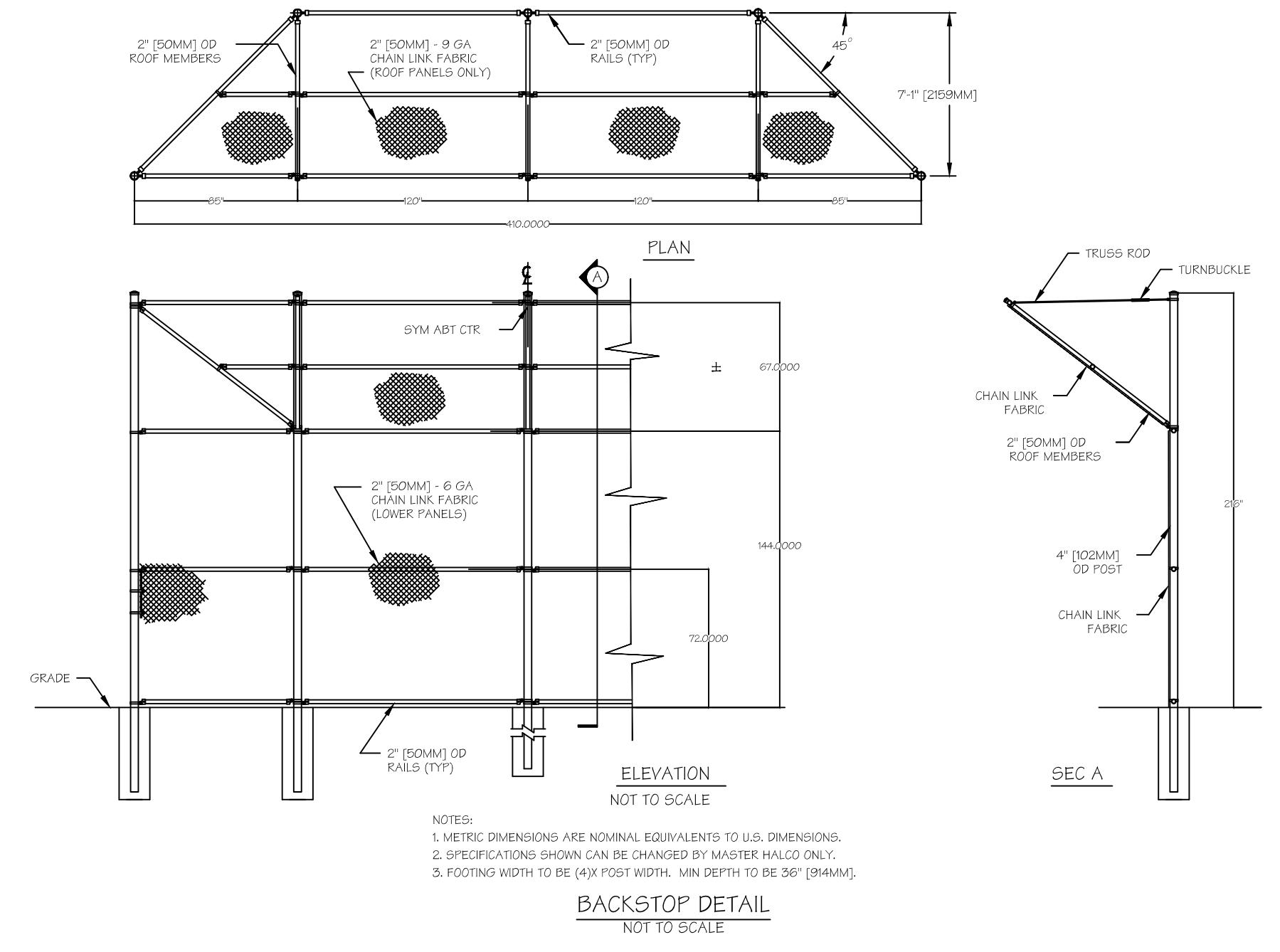
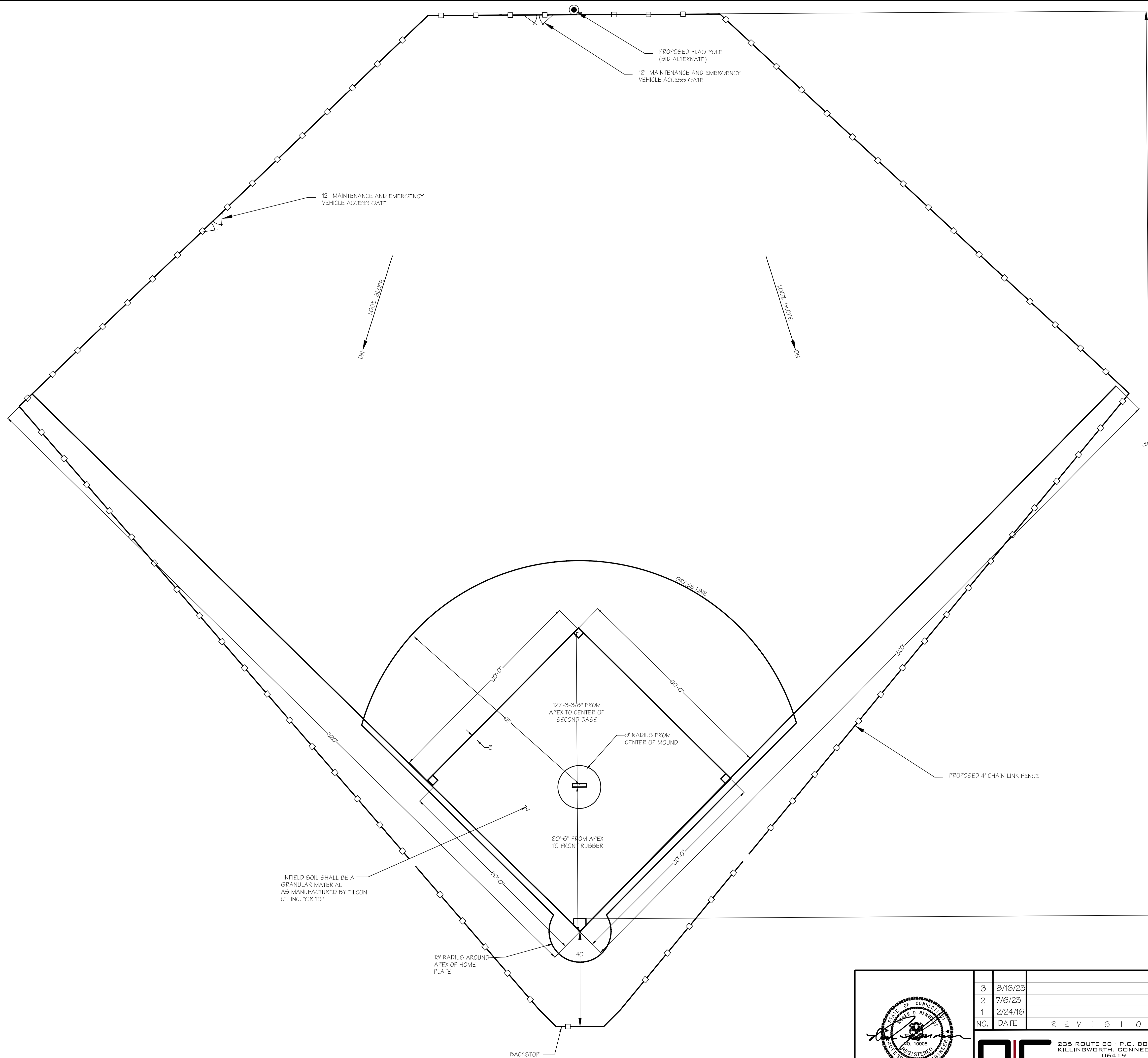
1. TITLE SHEET
2. SITE PLAN & EROSION AND SEDIMENT CONTROL PLAN
3. FIELD LAYOUT PLAN
4. DETAILS & NOTES

OWNER/APPLICANT:  
TOWN OF KILLINGWORTH  
TOWN HALL  
323 ROUTE 81  
KILLINGWORTH, CONNECTICUT 06419  
860-663-1765  
ATTN: NANCY GORSKI, FIRST SELECTMAN

ENGINEER:  
NEMERGUT CONSULTING  
235 ROUTE 80 P.O. BOX 666  
KILLINGWORTH, CONNECTICUT 06419  
PHONE: 860-663-2384  
EMAIL: ADMIN@NEMERGUTCONSULTING.COM

**NIC**  
NEMERGUT CONSULTING  
235 ROUTE 80 - P.O.  
BOX 666  
KILLINGWORTH,  
CONNECTICUT 06419  
PHONE: 860.663.2384  
NEMERGUTCONSULTING.COM





NOTES:  
 1. FENCE FABRIC SHALL BE SECURED TO GATE FRAMES WITH KNUCKLED BELTVAPE ALONG ALL EDGES FOR ALL TYPED CHAIN LINK FENCE INSTALLATIONS.  
 2. REFER TO SPECIFICATION FOR ALL FENCE TYPES, WIRE FABRIC GAUGES, FOOTING SIZES & OTHER APPLICABLE INFORMATION.  
 3. ALL CONCRETE FOOTINGS AROUND POSTS AT GROUND LINE SHALL BE MOUNDING & SLOPED FOR POSITIVE DRAINAGE.

CAD FILE: 418-05-03.DWG

	3	8/16/23	
	2	7/6/23	
	1	2/24/16	
	NO.	DATE	REVISION

235 ROUTE 80 - P.O. BOX 666  
 KILLINGWORTH, CONNECTICUT 06419  
 PHONE: 860.663.2384  
 NEMERGUTCONSULTING.COM

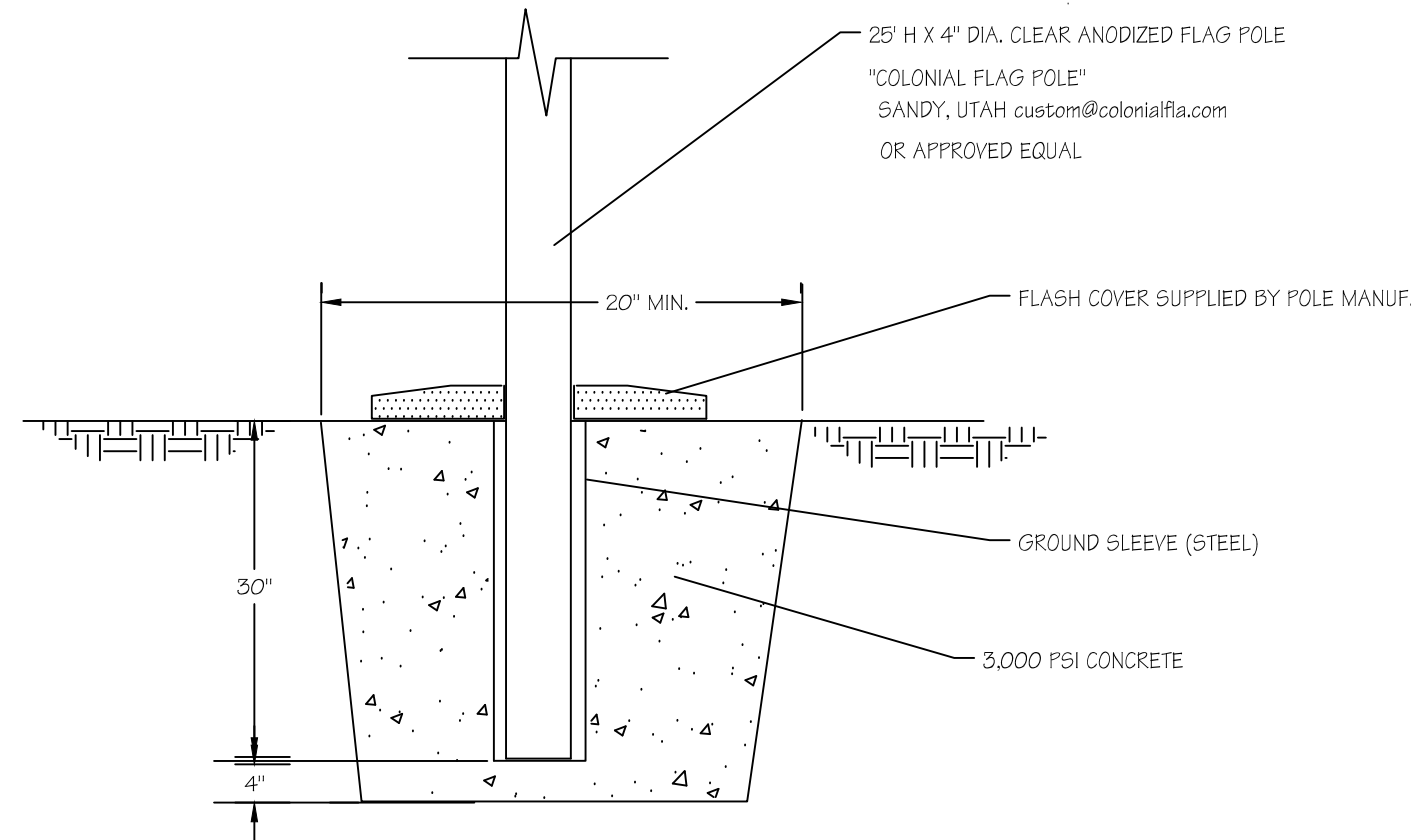
PROPOSED BASEBALL/MULTI-PURPOSE ATHLETIC FIELD  
 ERIC W. AUER KILLINGWORTH RECREATIONAL PARK PHASE II  
 PARKER HILL ROAD EXTENSION  
 KILLINGWORTH, CONNECTICUT

FIELD LAYOUT PLAN

DATE: DECEMBER 6, 2010

SCALE: 1" = 20 FEET

SHEET 3 OF 4

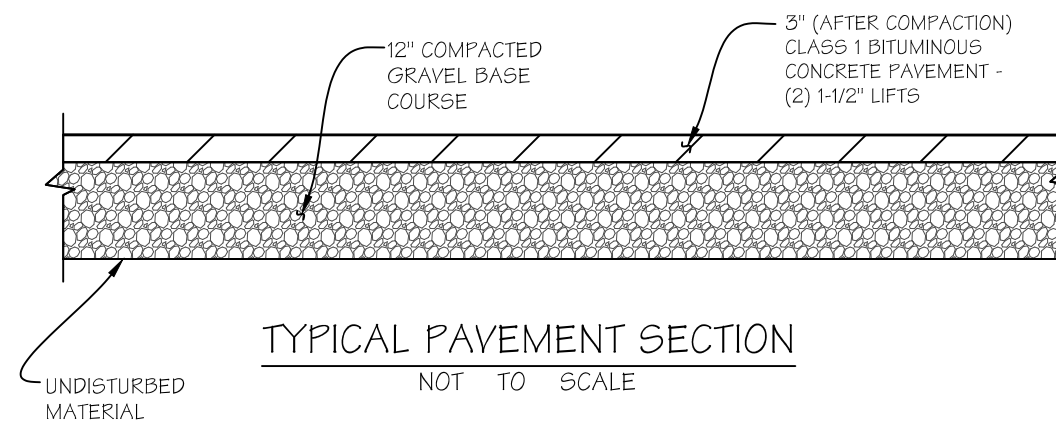


FLAG POLE BASE DETAIL  
NOT TO SCALE

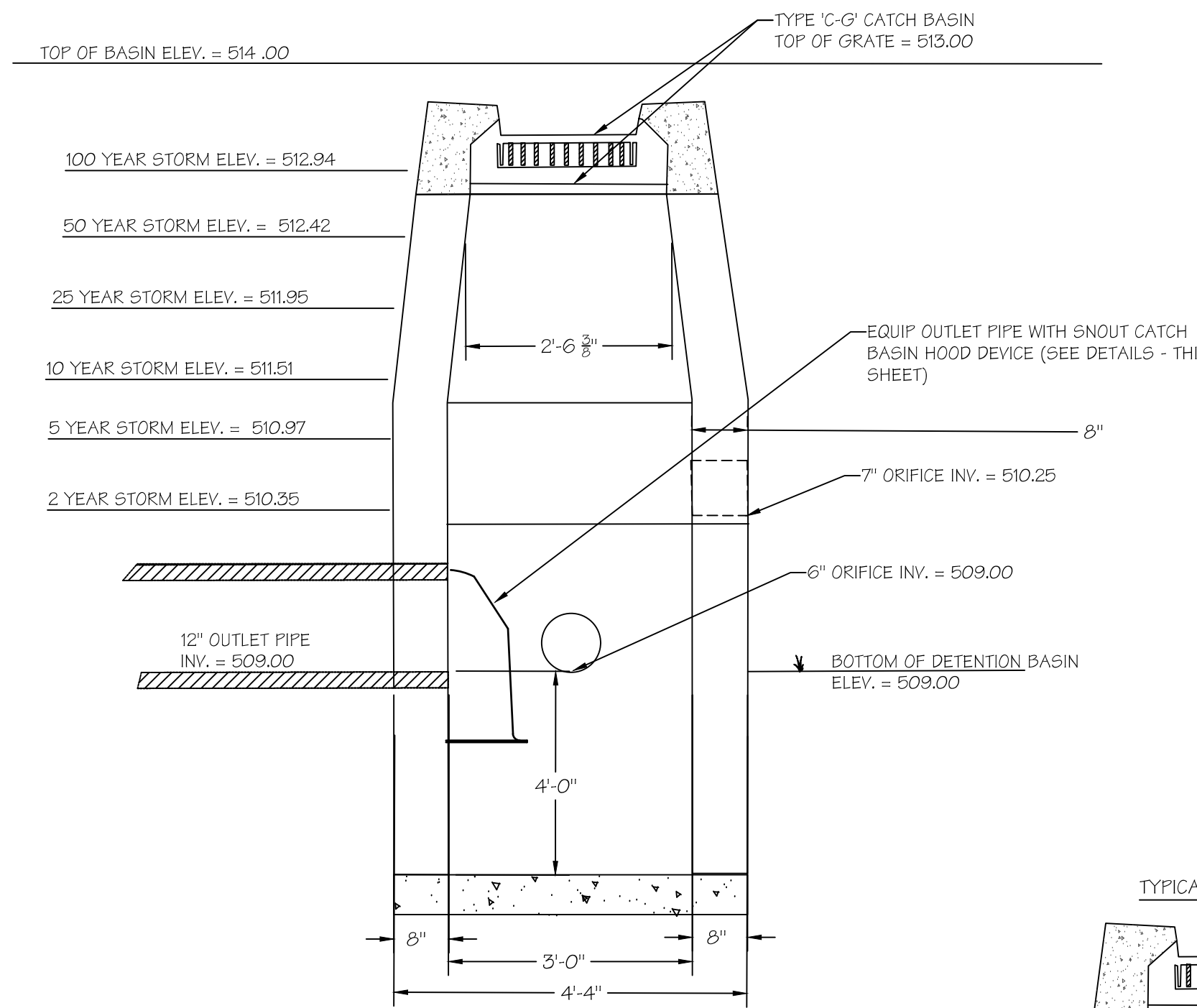
DETENTION BASIN SEED MIXTURE  
NEW ENGLAND WETLAND PLANT, INC.  
WETMIX (WETLAND SEED MIX)

BOTANICAL NAME	COMMON NAME	IND.
CAREX LURIDA	LURID SEDGE	OBL
CAREX SCOPARIA	BLUNT BROOM SEDGE	FCW
VERBENA HASTATA	BLUE VERVAIN	OBL
CAREX LUPULINA	HOP SEDGE	OBL
SCRIPUS ATROVIRENS	GREEN BULRUSH	OBL
PANICUM RIGIDULUM	REDTOP PANIC GRASS	FCW+
DESCHAMPSIA CESPITOSA	TUFFED HAIRGRASS	FCW
BIDENS ARISTATA	TICKSEED SUNFLOWER	FCW
ELEOCHARIS PALUSTRIS	CREeping SPIKE RUSH	OBL
JUNCUS EFFUSUS	SOFT RUSH	FCW+
CAREX CRINITA	FRINGED SEDGE	OBL
MIMULUS RINGENS	SQUARE STEMMED MONKEY FLOWER	OBL
ASTER FUNICEUS	SWAMP ASTER	OBL
EUPATORIUM PERFORIATUM	BONESET	FCW
GLYCYERIA CANADENSIS	RATTLESNAKE GRASS	OBL
ASCLEPIAS INCARNATA	SWAMP MILKWEED	OBL
HELENIUM AUTUMNALE	COMMON SNEEZEWEED	FCW+
FENTHORUM SEDOIDES	DITCH STONECROP	OBL

APPLICATION RATE: 1 LB/2500 SQ. FT  
19 LBS/ACRE

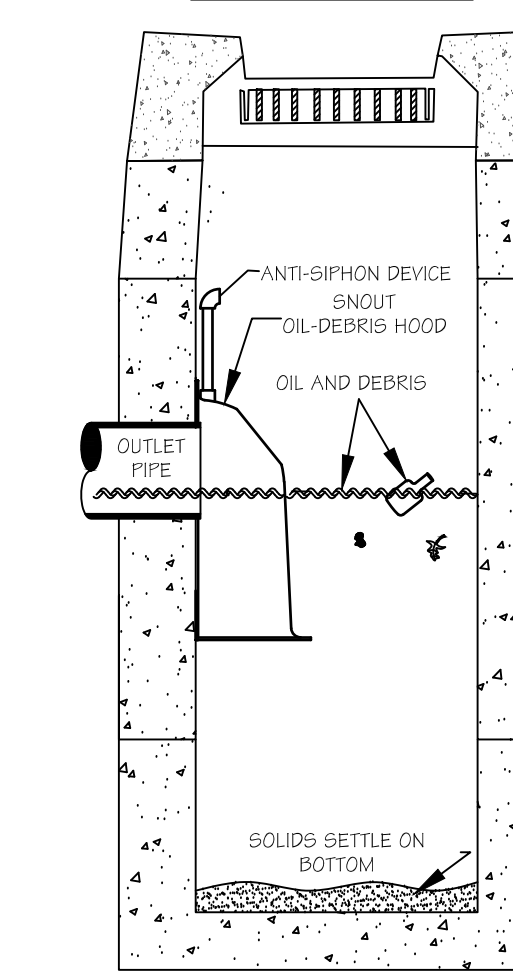


TYPICAL PAVEMENT SECTION  
NOT TO SCALE



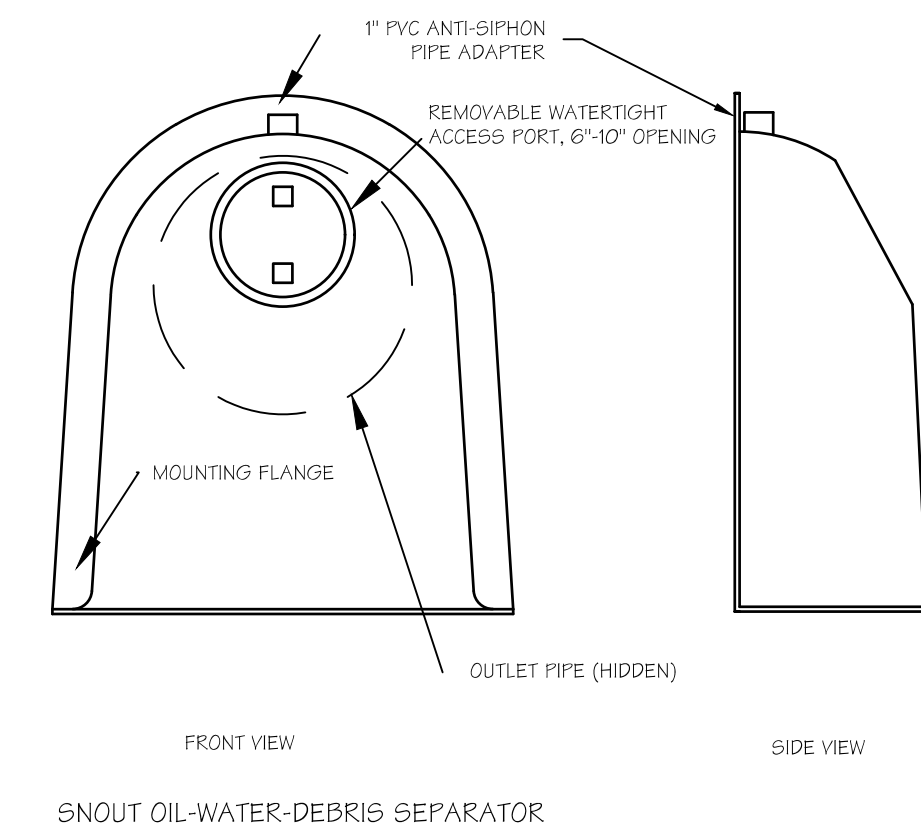
DETENTION BASIN OUTLET  
DEVICE DETAIL  
NOT TO SCALE

TYPICAL INSTALLATION

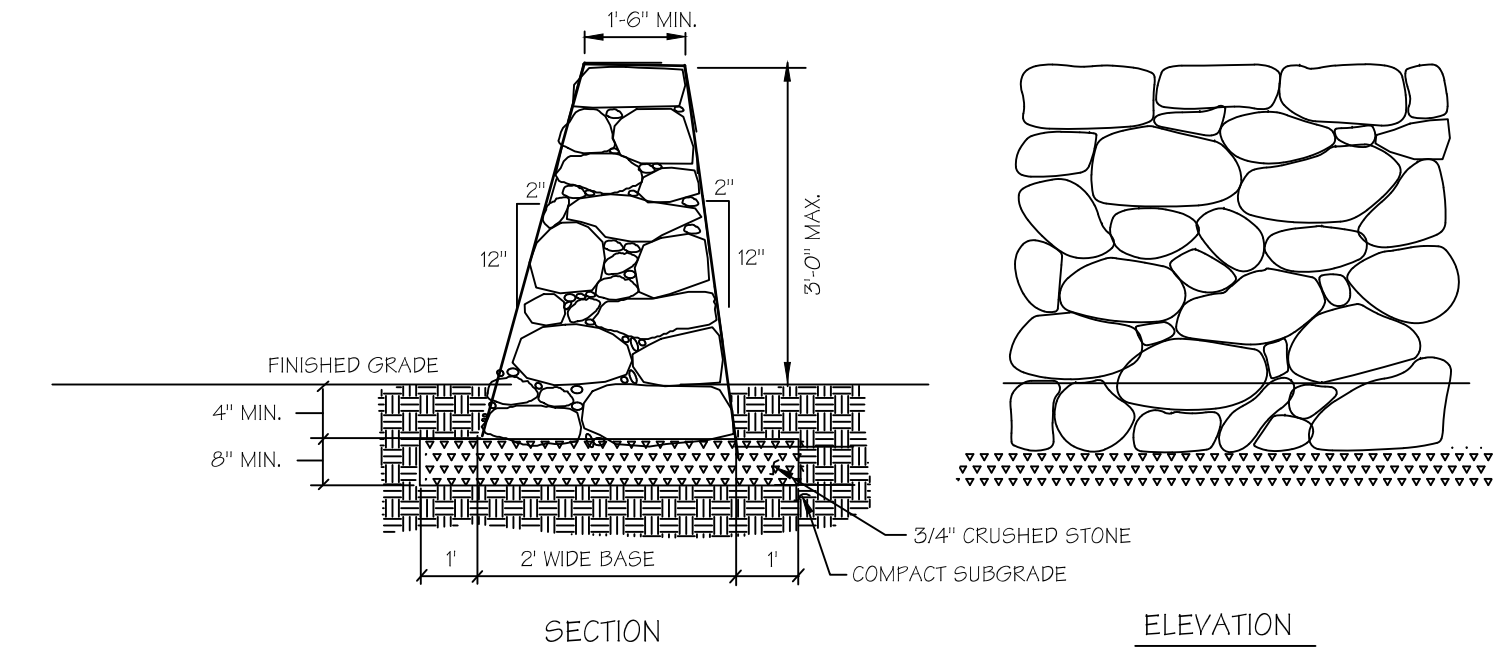


SNOUT CATCH BASIN HOOD  
SPECIFICATION DETAIL  
NOT TO SCALE

CONFIGURATION DETAIL



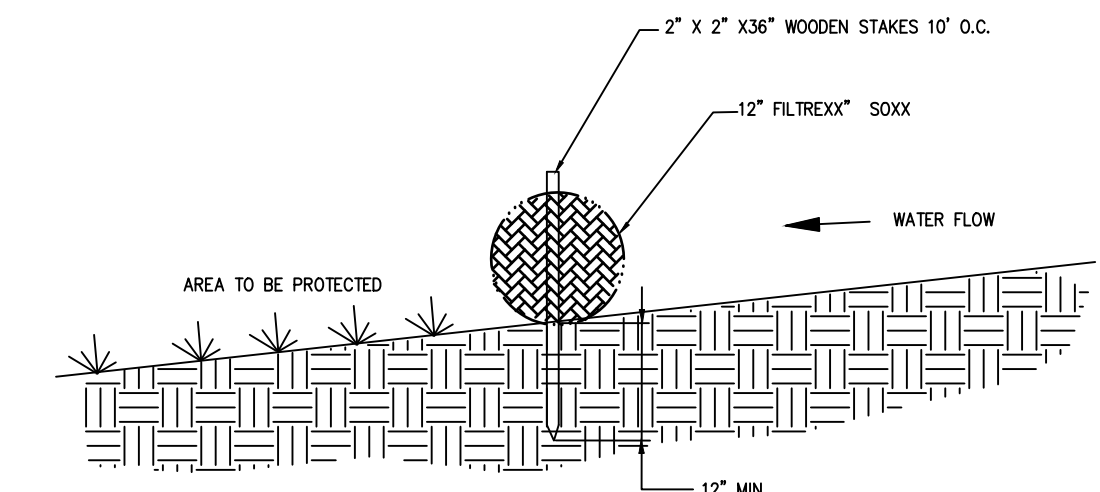
SNOUT OIL-WATER-DEBRIS SEPARATOR



DRY STONE WALL  
NTS

STONE WALL NOTES:

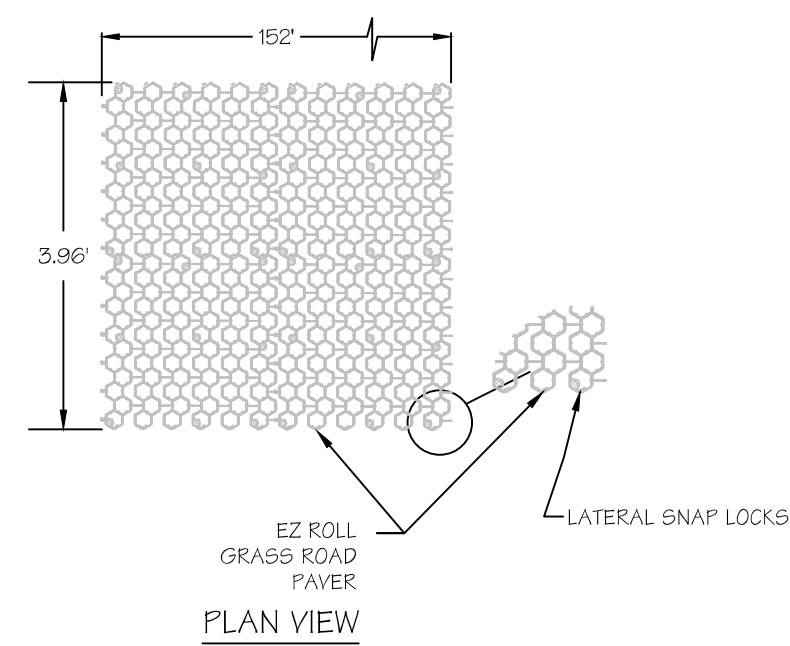
1. LAY STONES EVERY 4' - 6' HORIZONTALLY.
2. STAGGER JOINTS VERTICALLY.
3. USE ON-SITE EXISTING STONES.
4. SET FLATER STONES ALONG CAP.
5. EXPOSED FACE SHALL HAVE AN ATTRACTIVE, CONSISTENT APPEARANCE.



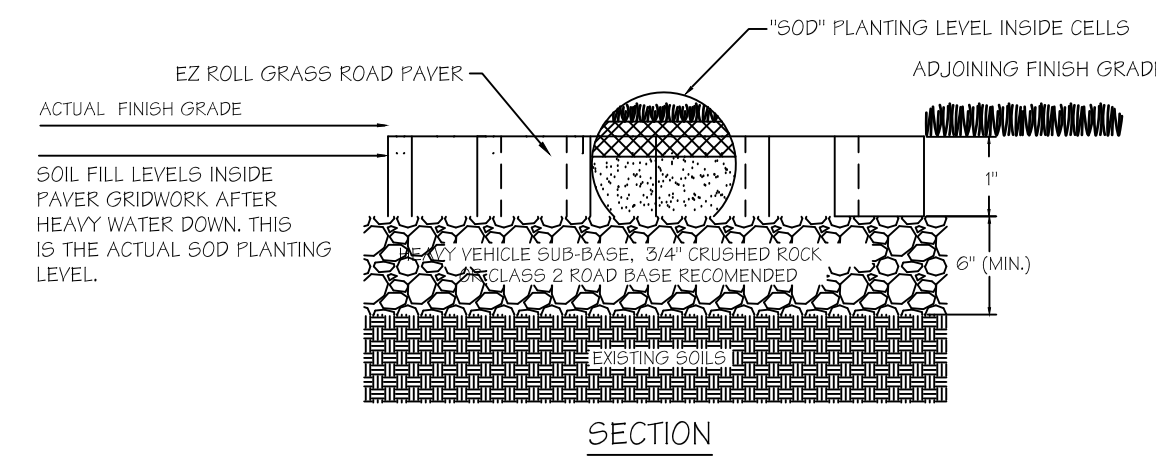
SEDIMENT BARRIER "FILTRIXX" SOXX DETAIL  
NTS

FILTRIXX SOXX NOTES:

1. ALL MATERIAL TO MEET "FILTRIXX" SPECIFICATIONS.
2. FILTER MEDIA FILL SHALL MEET APPLICATION REQUIREMENTS.
3. COMPOST MATERIAL TO BE DISPERSED ON SITE AS DETERMINED BY ENGINEER.



PLAN VIEW



SECTION

SOIL INFILL THE COMPOSITION OF THE MATERIAL WILL BE BASED ON LOCAL CONDITIONS AND DETERMINED BY THE LANDSCAPE ARCHITECT OR AS SPECIFIED IN THE CONTRACT DOCUMENTS. GRASS SEED OR SOD TYPE TO BE AS SPECIFIED IN THE CONTRACT DOCUMENTS OR BY DESIGN LANDSCAPE ARCHITECT.

TECHNICAL SERVICES  
1-888-825-4716  
techservices@ndsp.com

TYPICAL EZ-ROLL GRASS PAVER DETAIL  
N.T.S.



12" x 24" HANDICAPPED PARKING SIGN

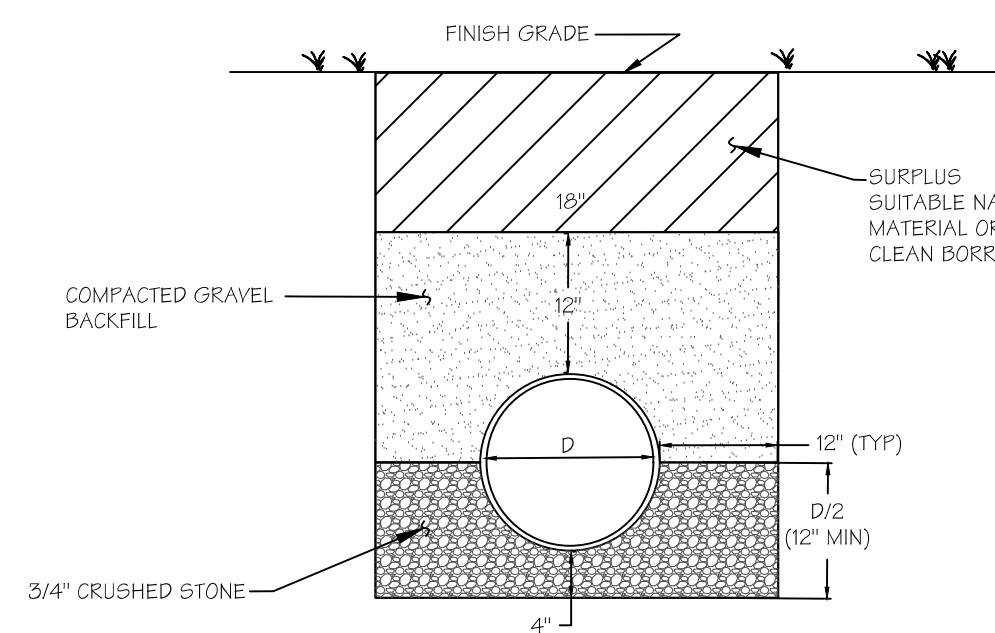
12" x 6" VAN ACCESSIBLE SIGN MOUNTED BELOW HANDICAPPED PARKING SIGN AT VAN ACCESSIBLE PARKING SPACES

ADA Signs Comply with State Laws.

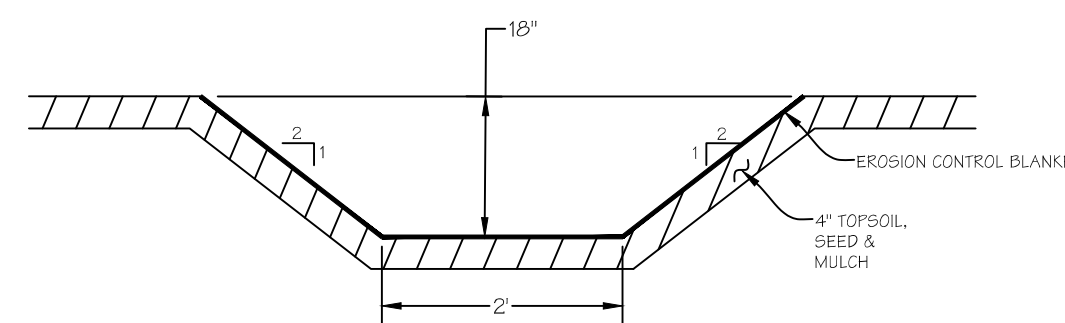
- Reflective aluminum material is visible at night. Handicapped parking signs use 3M's reflective engineer grade film.
- Sign is fabricated from aluminum that is rigid and durable and does not rust.
- Signs have predrilled holes for easy installation. Mount signs on U-Channel posts or fences.
- Signs are printed using enamel inks.

\*\*VAN ACCESSIBLE SIGN TO BE PLACED AT INTERSECTION LINES

HANDICAPPED SIGN DETAIL  
NOT TO SCALE



TYPICAL TRENCH SECTION  
NOT TO SCALE



VEGETATED DRAINAGE SWALE DETAIL  
NOT TO SCALE

	3	8/16/23		PROPOSED BASEBALL/MULTI-PURPOSE ATHLETIC FIELD ERIC W. AUER KILLINGWORTH RECREATIONAL PARK PHASE II PARKER HILL ROAD EXTENSION KILLINGWORTH, CONNECTICUT
	2	7/16/23		
	1	2/24/16		
	NO.	DATE	REVISION	
		235 ROUTE 80 - P.O. BOX 666 KILLINGWORTH, CONNECTICUT 06419 PHONE: 860.663.2384 NEMERGUTCONSULTING.COM		DATE: DECEMBER 6, 2010  SCALE: AS NOTED  SHEET 4 OF 4

DETAILS & NOTES